

Shade Schedule

Our newly designed "Flat 2028"

The "shade schedule" below compares the shade provided by the original "Flat" and the newly designed "Flat 2028". This hourly analysis gives a snapshot of the ability for each orientation and modular components to cast shade on the waiting area inside and in front of the shelter.

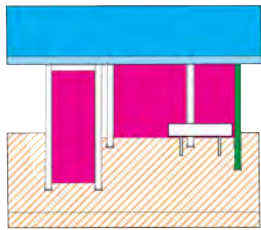
Based on our analysis and design process, the newly designed "Flat 2028" accomplishes 99% shading year-round.

Legend:

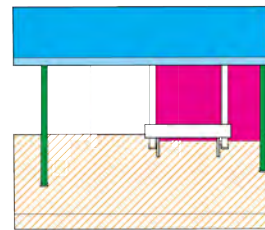
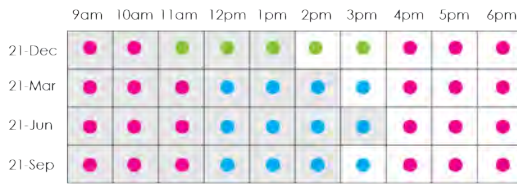
- side panel casts shade
- back panel casts shade
- roof panel casts shade
- empty space indicates shelter is in the sun

A dot indicates that shade is present at the indicated time. The color of the dot shows which panel is providing the shade.

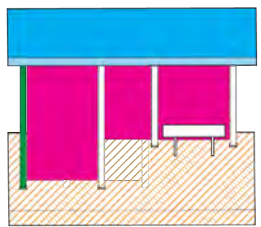
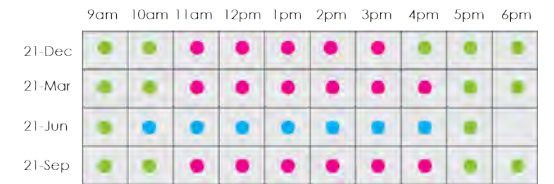
The background color refers to the shade analysis for La's current bus shelters. A grey fill means that the shelter currently in use provides shade at this time.



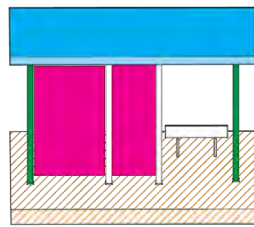
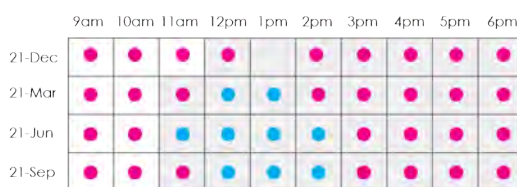
Northbound



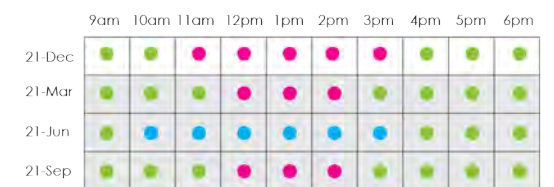
Eastbound



Southbound



Westbound



Sherman Way / Balboa Blvd Westbound, Lake Balboa, CD 6
 Single standard shelter with ad panel, litter/recycling bin, real-time arrival display, additional seating

Flat 2028

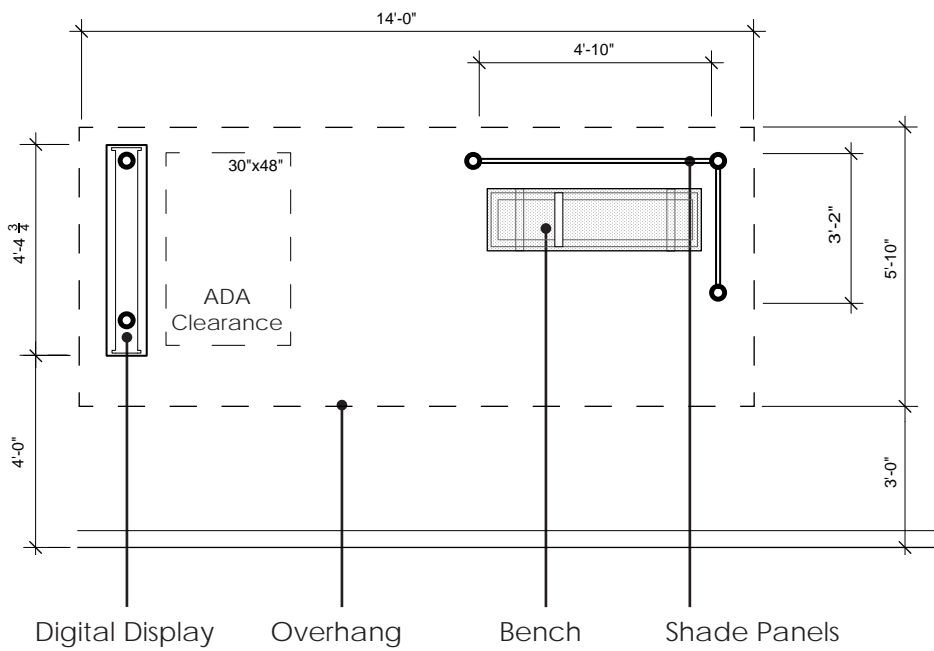
Classic Model



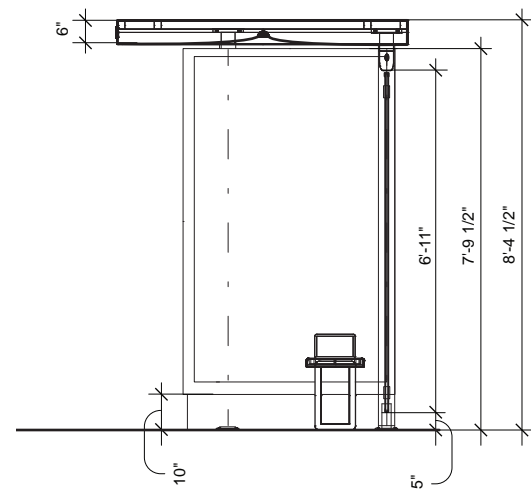
Flat 2028 without Ad



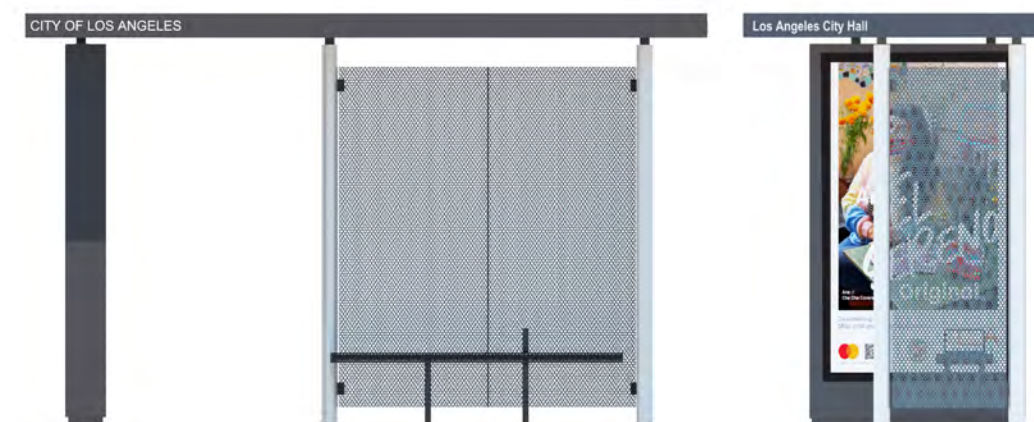
Flat 2028 with Ad



Flat 2028 Plan
Scale: 1/4" = 1'-0"



Flat 2028 Section
Scale: 1/4" = 1'-0"



Flat 2028 Front Elevation
Scale: 1/4" = 1'-0"

Flat 2028 Side Elevation
Scale: 1/4" = 1'-0"

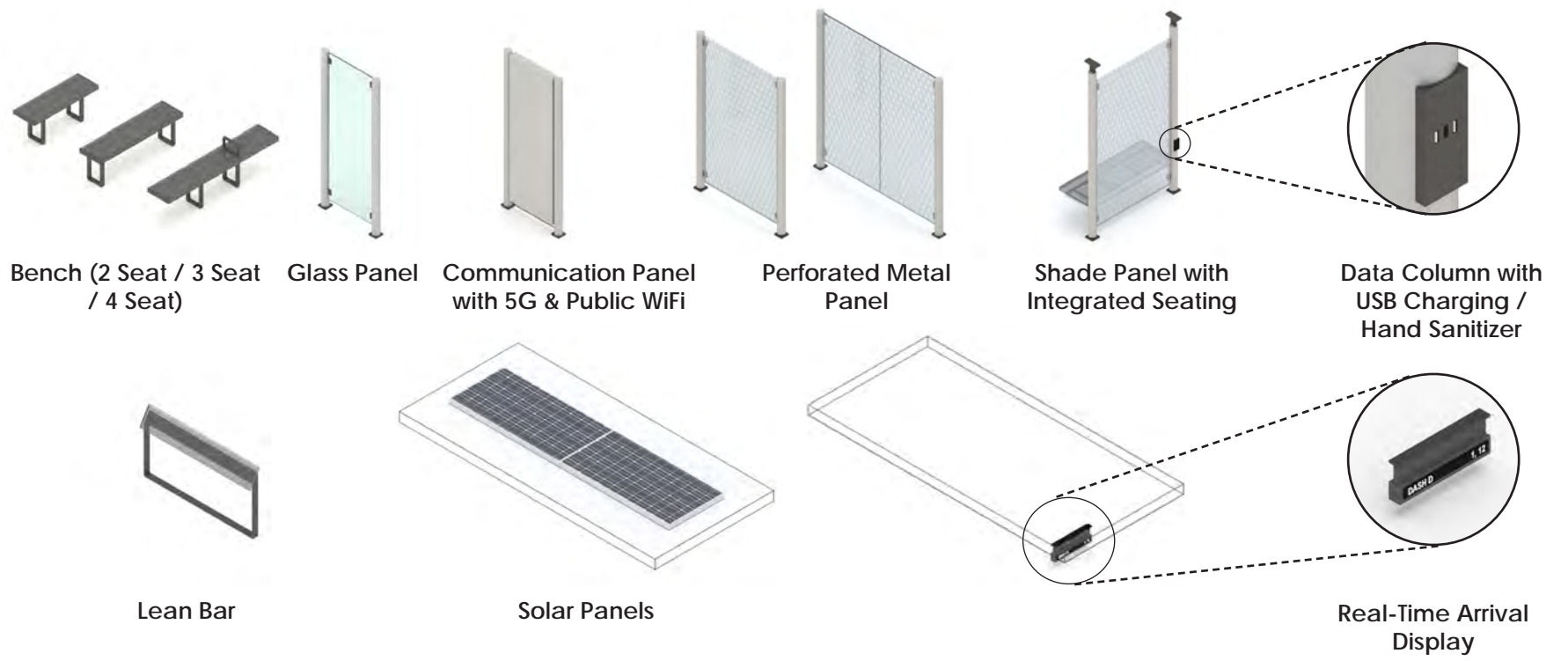
The "Flat 2028" has a highly flexible roof structure with shade panel options in multiple locations on the ceiling:

traditional back and side panels and, an added front panel.

The added front panels optimize shade at challenging westbound and northbound locations. Individual shade panels can be placed according to local conditions to optimize for shade, safety, and comfort throughout the day.

The "Flat 2028" comes in a variety of sizes to accommodate narrow sidewalk locations, low and high ridership locations, and additional revenue potential.

Kit of Parts



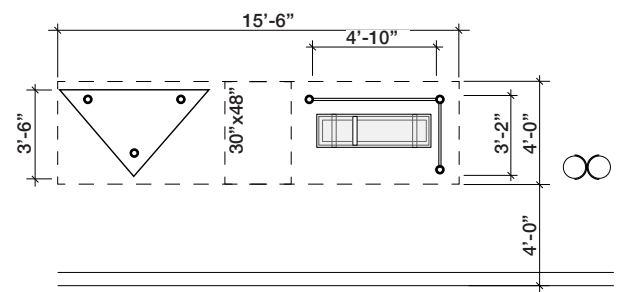
Variability



Flat 2028 Mini Shelter
7'-0"W X 6'-0"D X 8'-5"H



Flat 2028 Narrow Shelter
15'-6"W X 4'-0"D X 8'-5"H



Flat 2028 Narrow Shelter Plan
Scale: 1/8" = 1'-0"

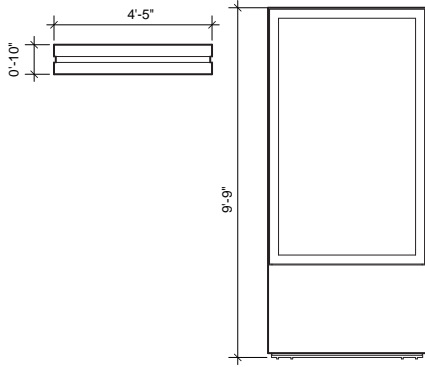


Flat 2028 Double Shelter with Elevated Urban Panel
28'-0"W X 6'-0"D X 8'-5"H



Flat 2028

Program Elements



Flat 2028 Urban Panel Plan & Elevation
Scale: 3/16" = 1'-0"

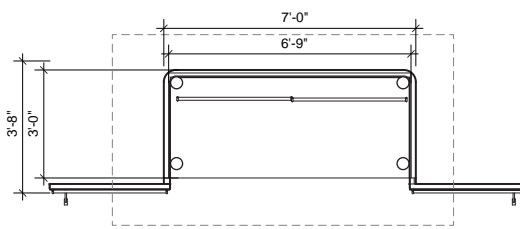


Litter / Recycling
Each 2'-5" L x 1'-6" Ø
(25 gal.)

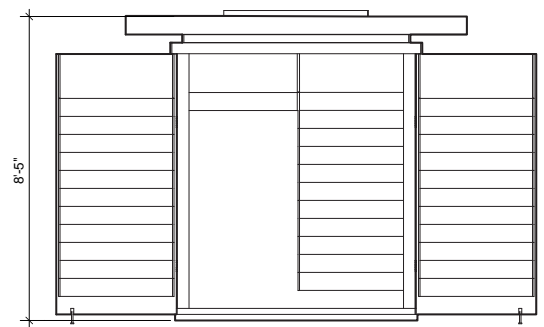


Hydration Station
1'-0" W x 11" D x 3'-0" H

Bicycle Racks
3'-0" W x 2'-6" H x 3" Ø



Flat 2028 Vending Kiosk Plan & Elevation
Scale: 3/16" = 1'-0"



Vending Kiosk Front and Back Views
6'-8" W x 3'-1" D x 8'-5" H



Elevated Urban Panel
8'-0" W x 1'-0" D x 23'-10" H

Urban Panel
4'-5" W x 10" D x 9'-9" H

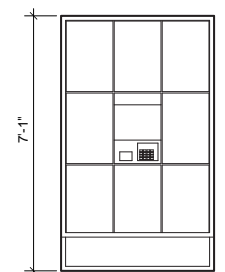
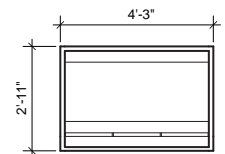


Digital Display
4'-5" W x 10" D x 8'-2" H

Interactive Information Kiosk
2'-0" W x 4" D x 5'-9" H



eLockers
4'-3" W x 2'-6" D x 7'-1" H



Flat 2028 eLockers Plan & Elevation
Scale: 3/16" = 1'-0"

*Also Available

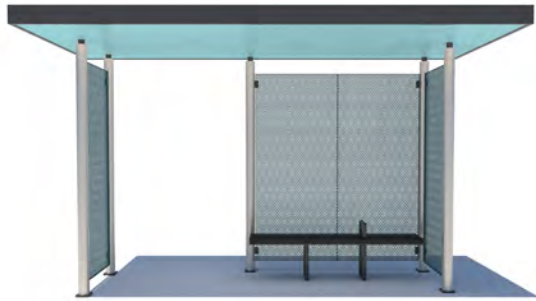
- "Blade" Rotating Bench with Integral Vertical Shade
- Hand Washing Station
- Cooling Station
- EV/Charging Stations
- Public Toilets
- Corrals for Scooters/Bicycles
- Traffic Barriers
- Bollards
- Pillars
- Bus Stop Sign



Color applied to shade panels



Multiple colors applied to shade panels and underside of roof



Color applied to shade panels and underside of roof



The iconic “floating roof” design is made possible by round columns and a refined roof attachment detail.

A smooth fiberglass roof underside provides new color contrast and turns a simple shelter into an outdoor room. Color options allow for customization.

Recessed LED spots give more uniform lighting with reduced energy use.

New shade mesh and glass panel options add color accents and a uniquely designed detail to the side panels.



Mariachi Plaza Westbound, Boyle Heights, CD 14
Single standard shelter, interactive information kiosk, additional shade panels